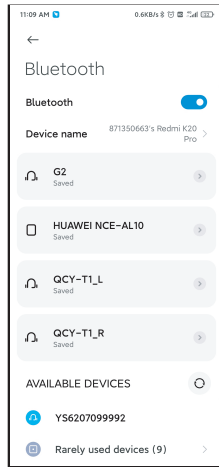


Bluetooth version operation process

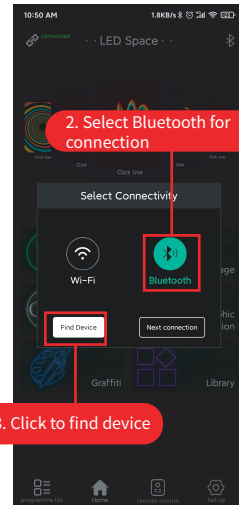
Part 1: Download the "LED Space" APP

1. Scan the QR code or search and download the LED space APP in Google Play or App Store.
2. Plug in the product to power on, and turn on the phone's Bluetooth



Part 2: Connect the phone to the device

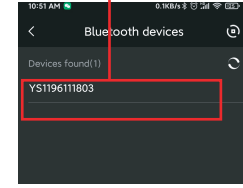
1. Keep the phone's Bluetooth on and start the LED space



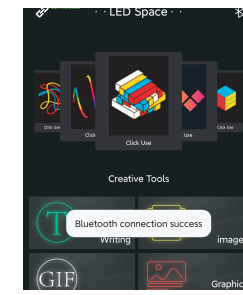
2. Select Bluetooth for connection

3. Click to find device

4. Tap your device number to connect

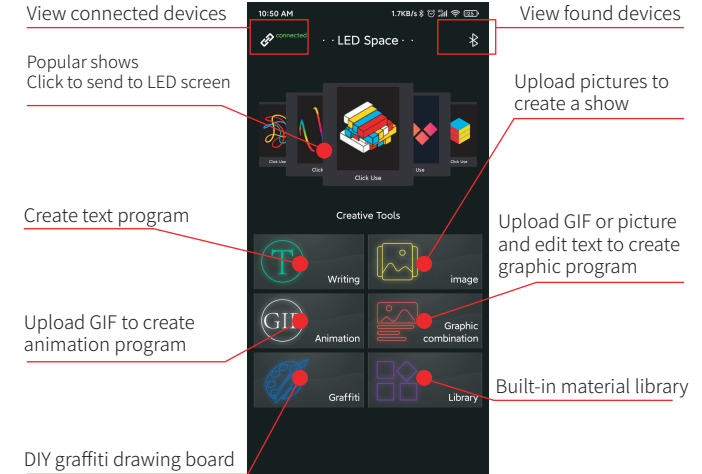


5. The connection is successful



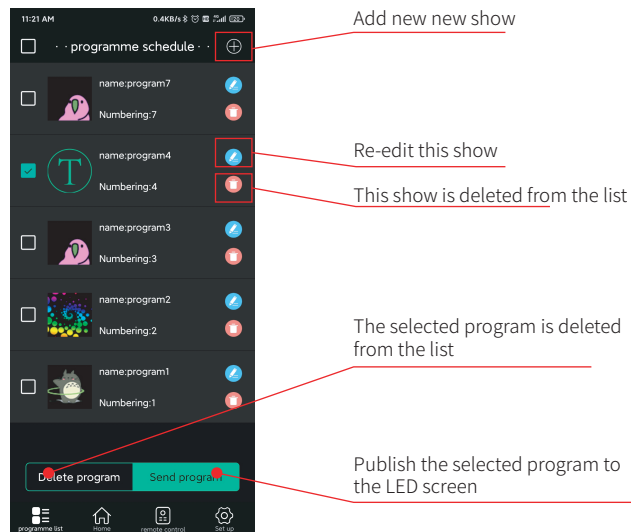
Part 3: Function Introduction

1. Home

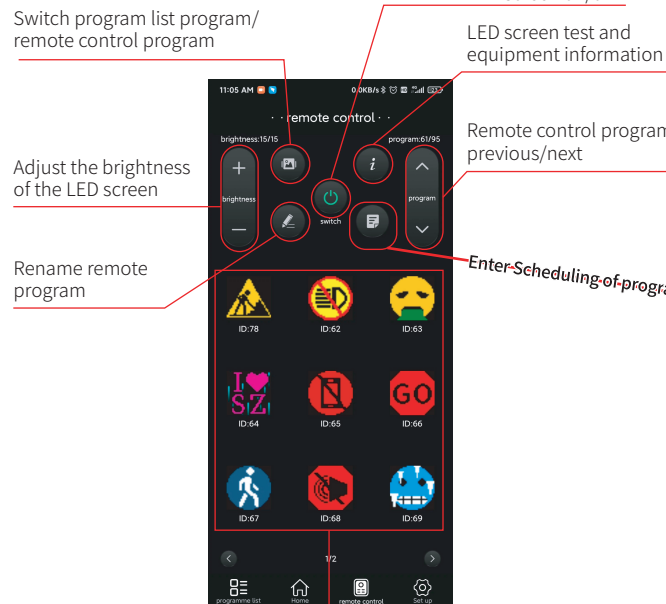


2. programme schedule

In addition to remote control programs, published and saved programs will exist in the program list



3. remote control



Remote control program Click to play the content in real time

4. Set

